

**HIGH PERFORMANCE
SOLUTIONS
FOR DEMANDING
APPLICATIONS**



ABOUT US

At Afton, our dedicated team of specialists will help answer your complex technical questions while ensuring your products arrive on time, and as specified.

Afton Plastics is a quality-driven manufacturer of advanced high-performance thermoplastic shapes and components. Our precision manufactured polymers include a vast portfolio of sheet, rod and cylinder shapes engineered using premium materials.

CONTACT US

Address:

9701 Penn Avenue S. | Suite 107
Bloomington, MN 55431

Toll Free:

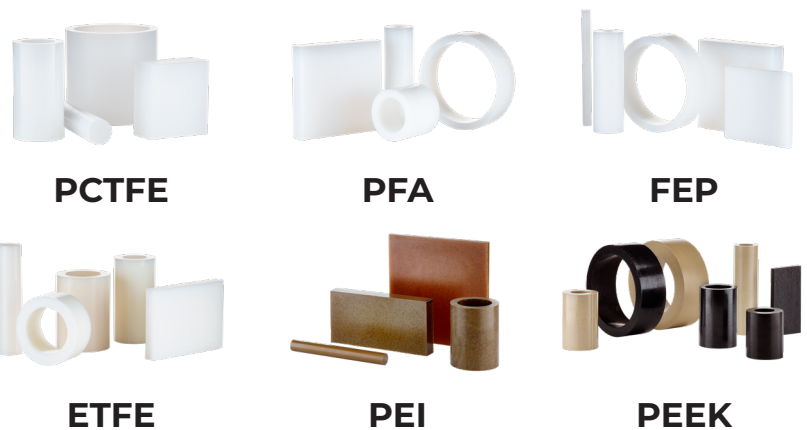
1 (800) 344-7499

Fax:

1 (952) 881-6565

Website:

www.aftonplastics.com



PCTFE

PFA

FEP

ETFE

PEI

PEEK

OUR APPROACH

As experts in high performance engineering thermoplastics, you can count on us to provide:

- Unmatched Customer Service
- Competitive Pricing
- Quality Manufacturing
- Short Lead Times
- Same Day Shipping
- Low Order Minimums
- Custom Sizing
- Extensive Inventory

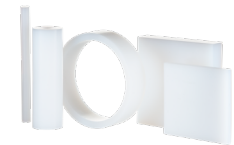
Afton Plastics offers full product customization using a variety of fillers and colors. In addition, we provide custom sizes and tailored tolerance to meet your needs.


PCTFE

Grade	Grade Notes	Specification	Max Sheet Size	Sheet Thickness Min - Max	Rod Diameters Min - Max	Custom Cylinder*
M-400H	Replaces Kel-F® Natural	ASTM D 1430-17 Group 01, Class 1, Grade 3	6" x 6"	1/32"	1/8" - 2 3/4", .022" - .100" Spooled	Yes
			10" x 10"	1/16"		
			24" x 24"	1/8" - 2 3/4"		


PFA

350	General Purpose	ASTM D 3307-16 Type II	24" x 24"	1/8" - 1 1/2"	1/8" - 1 1/2", Weld Rod	Yes
440HP	High Purity	ASTM D 3307-16 Type I	Not Offered	Not Offered	2", 3", 3 1/4", 4"	Yes
450HP	High Purity	ASTM D 3307-16 Type II	24" x 24"	1/8" - 2 3/4"	1/8" - 2 3/4", Weld Rod	Yes
AP-230	General Purpose	ASTM D 3307-16 Type II	24" x 24"	1/8" - 2 3/4"	1/8" - 2 3/4" Weld Rod	Yes
AP-231SH	High Purity	ASTM D 3307-16 Type II	24" x 24"	1/8" - 2 3/4"	1/8" - 2 3/4"	Yes


FEP

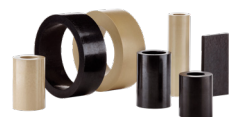
100	Natural	ASTM D 2116-16 Type I	24" x 24"	1/8" - 3/4"	1/8" - 3/4"	Yes
9302	Natural	ASTM D 2116-16 Type IV	24" x 24"	3/8" - 2"	1/8" - 2", Weld Rod	Yes
NP-101	Natural	ASTM D 2116-16 Type II	24" x 24"	1/8" - 3/4"	Not Offered	Yes
NP-130	Natural	ASTM D 2116-16 Type IV	24" x 24"	1/8" - 2"	1/8" - 2", Weld Rod	Yes


ETFE

200	Natural	ASTM D 3159-15, Type I, Grade 1	24" x 24"	1/8" - 1 1/4"	1/8" - 3/4"	Yes
280	Natural	ASTM D 3159-15, Type I, Grade 1	24" x 24"	1/8" - 1"	1/8" - 1 7/8"	Yes
C88A- 25GF	25% Glass Filled	N/A	12" x 12"	1/4"	1/8" - 1 3/4"	Yes
HT-2181	Natural	ASTM D 3159-15, Type I, Grade 1	24" x 24"	1/8" - 1 1/4"	Not Offered	Yes
HT-2183	Natural	ASTM D 3159-15, Type I, Grade 1	24" x 24"	1/8" - 1 1/2"	1/8" - 1 7/8"	Yes


PEI

2100	Natural & Black	ASTM D 5205-16	12" x 12"	1/4" - 1 1/4"	1/2" - 2"	Yes
2200	Natural & Black	ASTM D 5205-16	12" x 12"	1/4" - 1 1/4"	1/2" - 2"	Yes
2300	Natural & Black	ASTM D 5205-16	12" x 12"	1/4" - 1 1/4"	1/2" - 2"	Yes
2400	Natural & Black	ASTM D 5205-16	12" x 12"	1/4" - 1 1/4"	1/2" - 2"	Yes
CRS5301	Chemical Resistant, Natural	ASTM D 5205-16	12" x 12"	1/4" - 2"	1/2" - 2"	Yes
EE004	20% Carbon Filled	ASTM D 5205-16	12" x 12"	1/4" - 1"	1/2" - 1 3/4"	Yes
EE005E	25% Carbon Filled	ASTM D 5205-16	12" x 12"	1/4" - 1"	1/2" - 1"	Yes


PEEK

450G	Virgin, Natural	Mil-P-46183 Type I	Not Offered	Not Offered	1"	Yes
450G903	Virgin Black	N/A	Not Offered	Not Offered	Not Offered	Yes
450CA30	30% Carbon Filled	Mil-P-46183 Type III, Class 2	12" x 12"	3/16" - 3/4"	1" - 1 3/4"	Yes
450FC30	Bearing Grade	N/A	12" x 12"	3/16" - 3/4"	1" - 3"	Yes

* Custom cylinders available upon request. Please provide customer finished dimensions.